



2630 Shea Center Drive, Livermore CA 94550

August 28, 2018

Marina Coast Water District
Engineering Department
2840 4th Avenue
Marina, CA 93933
Attn: Mike Wegley

Subject: The Dunes 1C Hot Water Recirculation

Dear Mike:

In response to customer feedback regarding long wait times for hot water, Shea Homes has been researching possible solutions to the problem. We propose the Grundfos Comfort Valve with HotButton kit to provide recirculation on demand as previously approved by Marina Coast Water District (MCWD) on October 6, 2016.

Shea Homes is prepared to move forward with installation of the Comfort Valve recirculation solution for the 118 homes at the Dunes 1C that did not receive the hot water recirculation loop during the original construction provided MCWD confirms in writing that the solution meets all MCWD water code's and standards.

Please let me know if you require any additional information on this issue, otherwise please provide your written approval.

Sincerely,

A handwritten signature in black ink, appearing to read "R. Chris Stump", written over a horizontal line.

R. Chris Stump
Community Development Manager
Shea Homes



MARINA COAST WATER DISTRICT

11 RESERVATION ROAD, MARINA, CA 93933-2099

Home Page: www.mcwd.org

TEL: (831) 384-6131 FAX: (831) 883-5995

DIRECTORS

THOMAS P. MOORE
President

JAN SHRINER
Vice President

HOWARD GUSTAFSON
WILLIAM Y. LEE
HERBERT CORTEZ

August 31, 2018

To: Chris Stump
Community Development Manager
Shea Homes
2630 Shea Center Drive
Livermore, CA 94550

Re: The Dunes Hot Water Recirculation

Chris,

This is in response to your letter dated August 28, 2018 regarding the Dunes houses that did not receive the operating hot water recirculation loop during original construction. As you may recall, MCWD previously allowed installation of the Grundfos Comfort valve between the faucet hot and cold water pipes with the Taco wireless remote call button, transmitter and receiver to the tankless hot water heater on homes already constructed without the recirculation loop and still in Shea Homes' possession. This was because the retrofit reduces water waste and avoided the extensive demolition and remodeling that would be required to plumb a hot water return pipe completing the recirculation loop.

In any event, MCWD has determined that the installation of the Grundfos Comfort valve with the Taco wireless remote call button is an approved retrofit that meets MCWD hot water recirculation system requirements. Shea Homes should verify that the proposed retrofit meets all plumbing requirements, local codes and permitting requirements before installation. Because the retrofit satisfies MCWD's code, owners with the retrofit will not be fined by MCWD or be required by MCWD to perform additional work in this regard. However, MCWD makes no representations, nor could it, with regards to any claims between any of the homeowners and Shea with respect to the conditions concerning their purchase of these houses.

Sincerely,

Michael Wegley
District Engineer

**DEMAND
MORE**

GRUNDFOS HOT WATER RECIRCULATION

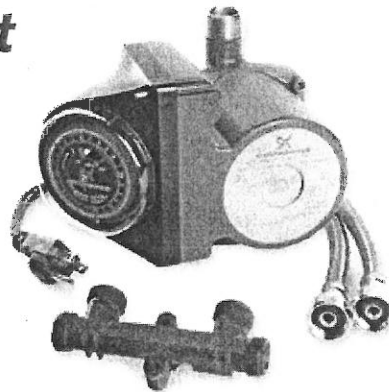
Hot water without the wait

Before Grundfos, hot water recirculation solutions were difficult, if not impossible. Now, installations in both new construction and existing homes are quick, easy and profitable.

Features & Benefits:

- Installations take an hour or less
- In retrofits, the Comfort System bypass valve makes it all possible with no return line and no need for electricity under the sink
- Uses less energy than a 25-watt light bulb (Comfort System Only)
- Can save up to 16,000 gallons of water per year
- Backed by a 30-month warranty
- All products certified to NSF-61 and NSF-372 standards

For more information, go to: grundfos.us



Comfort System
UP 15-10 SU7P TLC
Pump, valve, line-cord,
and (2) S.S. flex hoses.



COMFORT PM AUTO
UP 10-16 A PM BN5/LC
AUTOADAPT™ and line cord

  
ANSI/NSF61/372 and IAPMO listed

be
think
innovate

GRUNDFOS 